

## Clip Top Blumotion

5

Blum Concealed Hinges – Information



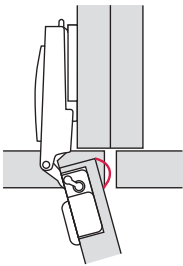
### Features

- The soft close integrated in the cup allows gentle and quiet closing.
- Soft close can be deactivated, e.g. for small and lightweight doors.
- Adaptive closing force – for permanent gentle and quiet closing, irrespective of door weight and closing speed
- No damages to the soft close through extreme temperatures (e.g. below zero)

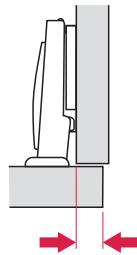


### Other advantages

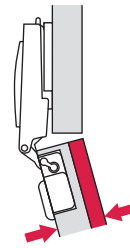
The door does not butt against the cabinet front edge at full opening angle



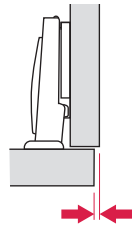
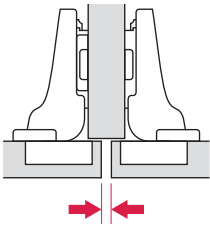
Door overlay up to 20 mm possible (with hinge for large overlay)



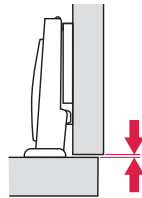
Greater door thicknesses possible



Smaller lateral minimum gap dimensions



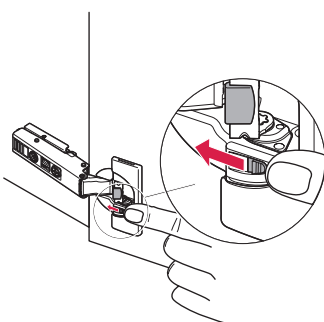
Smaller door gap



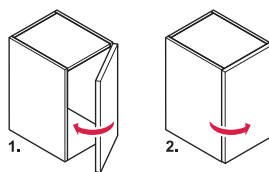
### Soft close activation and deactivation

The soft close in individual hinges can be deactivated, if required, in order to close small and lightweight doors faster.

#### Deactivating the soft close

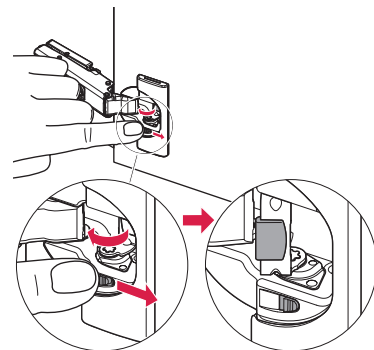


- Slide catch backwards



1. Close door
2. Soft close is deactivated on next opening

#### Activating the soft close



- Slide catch forwards
- Soft close is activated